



HVLP AIR CAP AND FLUID NOZZLE CHART

MODEL NO.	AIR CAPS	Press / Siphon	*MAX GUN INLET PRESS. FOR HVLP	FAN CONTROL	SCFM @ MAX GUN INLET	AIR CAP RING	AVAILABLE FLUID NOZZLES TIPS	NEEDLES / marking on needle
L100H	21-1090	pressure	15	60-1502 (#2)	6	21-1001	31-0205 0.5mm (.020")	40-1100 (100)
	21-1091	pressure	15		8		31-0208 0.8mm (.022")	
	21-1092	pressure	15		8		31-0210 1.0mm (.040")	
	21-1093	pressure	18		10		31-0212 1.2mm (.046")	
	21-1094	pressure	33		13		31-0213 1.3mm (.052")	
	21-1095	pressure	50		22.5		31-0214 1.4mm (.055")	
	21-1097	pressure	50		22.5		31-0215 1.5mm (.059")	
	21-1195	pressure	50		22.5		31-0216 1.6mm (.063")	
	21-1197	pressure	50		22.5	31-0217 1.7mm (.070")		
					included	31-0412 1.2Fmm (.046")	40-1112F (112F)	
						31-0414 1.4Fmm (.055")	40-1114F (114F)	
						31-0417 1.7Fmm (.070")	40-1117F (117F)	

*Note: Air cap test gages are available to confirm HVLP compliance.

CONVENTIONAL AIR CAP AND FLUID NOZZLE CHART

MODEL NO.	AIR CAPS	Press / Siphon	*SUGGESTED GUN INLET PRESS.	FAN CONTROL	SCFM	AIR CAP RING	AVAILABLE FLUID NOZZLES	NEEDLES / marking on needle
L100C	21-2163	pressure	50	60-1500	8	included		
	21-2263	pressure	50		14			
	21-2263-E	pressure	50		15		31-0606 0.6mm (.022")	
	21-2363	pressure	50		13.6		31-0607 0.7mm (.028")	
	21-2166	siphon	50		5		31-0610 1.0mm (.040")	
	21-2266	siphon	50		12		31-0612 1.2mm (.046")	
	21-2266-3	pressure	50		16.2		31-0613 1.3mm (.052")	
	21-2366	siphon	50		12		31-0615 1.5mm (.059")	
	21-2466	siphon	50		15		31-0618 1.8mm (.070")	
	21-2167	pressure	50		14.5		31-0622 2.2mm (.086")	
	21-2267	pressure	50		15		31-0628 2.8mm (.110")	
	21-2168	pressure	50		14			
	21-200**	pressure	50		5.2			
	21-201**	pressure	50		5.2			

Actual fluid nozzle and air cap combinations are determined by application (see application chart page 4)

*Gun inlet pressures may vary as required by application

**200 Air cap requires P/N 21-1583 base & 21-1584 ring

Operation and Maintenance Instructions for *L100* Spray Guns

Operation

1. Connect air supply hose at handle of gun.
2. Connect a pressurized fluid supply or paint siphon cup to the gun fluid inlet.
3. Fluid flow can be controlled using the fluid control knob, this restricts flow by limiting needle travel. It is best to control fluid flow by proper selection of fluid orifice size and use the fluid control knob to “fine tune flow rate”.
4. Fan width can be adjusted using the fan control knob. Turning the knob clockwise narrows the fan.

Maintenance

IMPORTANT! Routine cleaning and maintenance is essential to insure proper gun operation.

Several states prohibit spraying solvent into the atmosphere and require the use of covered gun cleaner.

1. If a gun cleaner is being used, connect and clean the gun in the gun cleaner according to the manufactures instructions.
2. If a gun cleaner is not being used:
For pressure setups, remove air cap and clean separately using clean solvent.
Connect a pressurized solvent supply to the fluid inlet, trigger the gun allowing solvent to flow thru the gun until clean.
For siphon setups, first clean the siphon cup thoroughly then spray clean solvent thru the gun until clean.

NOTE: Gun head disassembly is not recommended for normal cleaning and maintenance.

Gun head disassembly and reassembly instructions:

Gun head disassembly

To remove the nozzle carrier (5) and air cap adapter (7):

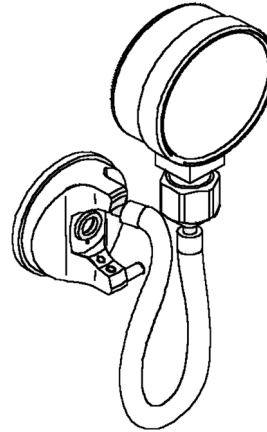
1. Remove the air cap (2), fluid nozzle tip (3), fluid nozzle body (4), and needle (14)
2. Remove the needle seal cartridge (24)
3. Loosen the locknut (10) and remove fluid inlet (11) using a 5/8” open-end wrench
4. The nozzle carrier and air cap adapter will now slide forward from the gun body (12).

Gun head reassembly

1. Install a new o-ring (8) on the air cap adapter.
2. Install gasket (6) into the air cap adapter. (*L100C ONLY*)
3. Install the thread locknut (10) onto the fluid inlet as far as possible.
4. Slide the nozzle carrier (5) into air cap adapter (7) and insert into the gun body as far as possible. Be sure the nozzle carrier extends into the hole at the back of the gun head. Install the needle seal (24) but do not tighten.
5. Rotate the nozzle carrier until the fluid inlet port in the nozzle carrier is aligned with the threaded hole in the body. While in this position, insert the fluid inlet (11) and tighten firmly.
6. Tighten the needle seal (24) to approx. 12 ft.-lb. torque.
7. Tighten the fluid inlet (11) to approx. 25 ft.-lb. torque.
8. Tighten the locknut (10) to approx. 33 ft.-lb. torque.

ITEM NUMBER	PART NUMBER	DESCRIPTION
1	See Air Cap Chart	Air Cap Ring
2	See Air Cap Chart	Air Cap
3	See Air Cap Chart	Fluid Nozzle Tip
4	See <i>LYNX</i> Model no.	Fluid Nozzle Body
5	See <i>LYNX</i> Model no.	Nozzle Carrier
6	See <i>LYNX</i> Model no.	Gasket*
7	See <i>LYNX</i> Model no.	Air Cap Adapter
8	See KIT NO. 10-106	O-Ring*
9	60-124	Fluid Inlet Seal
10	60-128	Locknut
11	60-126	Fluid Inlet Fitting
12	60-1114	<i>LYNX</i> Gun body HVLP
	60-1124	<i>LYNX</i> Gun body CONV.
13	See Air Cap Chart	Fan Control Assembly
14	See Air Cap Chart	Fluid Needle
15	60-202	Fluid Control Knob
16	See KIT NO. 10-106	Spring Seat*
17	See KIT NO. 10-106	Needle Return Spring*
18	60-201	Rear Bushing
19	See KIT NO. 10-106	Seal*
20	60-1520	Air Valve Assembly
21	60-302**	Air Valve Poppet
22	See KIT NO. 10-106	O-Ring*
23	See KIT NO. 10-106	Air Valve Spring*
24	60-1400*	Needle Seal Cartridge
25	60-2101	Trigger
26	60-1510	Air Control
26A	60-122	Plug (optional)
27	60-104	Air Inlet Fitting
28	60-1033	Trigger Pivot Set
29	98-109	Allen Plug

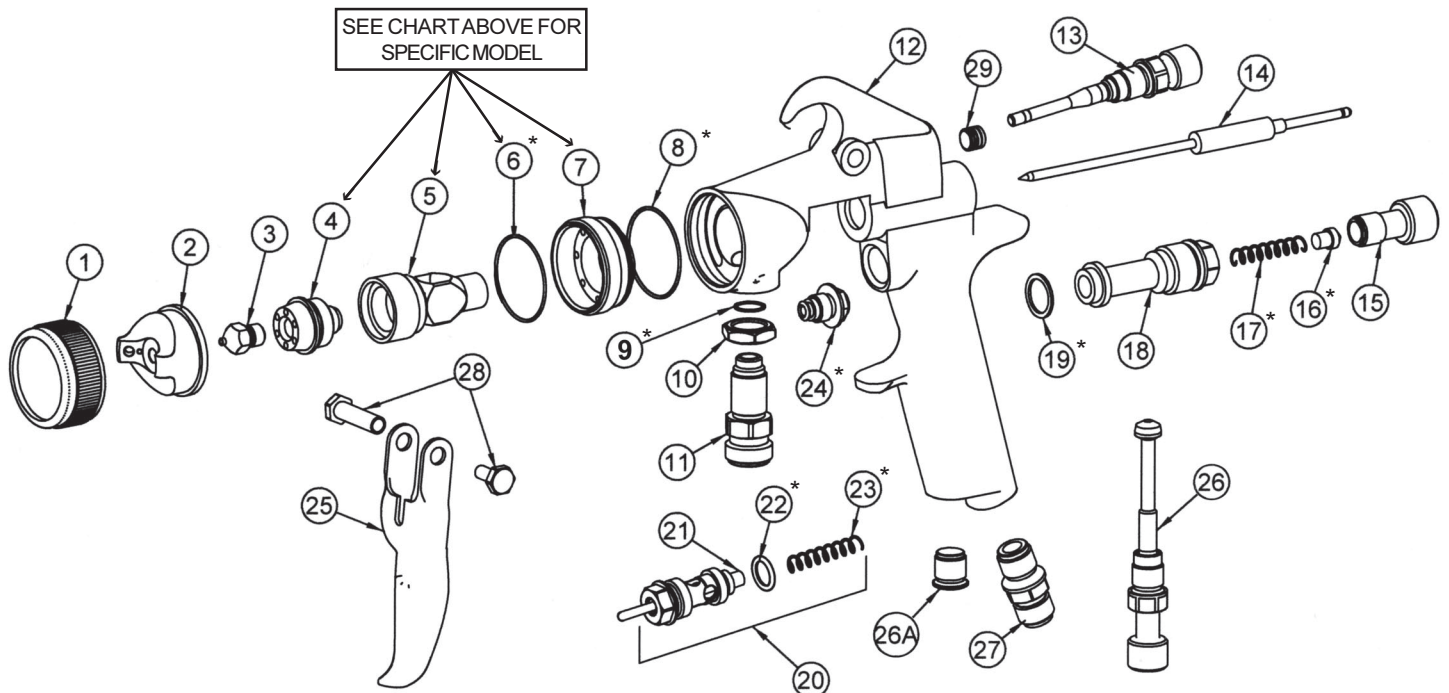
<i>LYNX</i> MODEL NO.	ITEM 4	ITEM 5	ITEM 6	ITEM 7
L100C	31-2201	60-L11C	61-1005	60-12C
L100H	31-1201	60-L11H	Not Used	60-12H



HVLP AIR CAP TEST GAGES	
FOR L100H GUNS	21-1090-G
	21-1092-G
	21-1093-G
	21-1095-G
	21-1097-G
	21-1195-G
	21-1197-G

* Included in KIT NO. 10-106

** Included with Air Valve Assembly 60-1520



FLUID NOZZLE / AIR CAP SELECTION CHARTS

LYNX SERIES 100 - Pressure / Siphon Feed Guns

L100H HVLP SPRAY GUN

MATERIAL TYPE	FLUID ORIFICE x AIR CAP	MAXIMUM PATTERN WIDTH	PRESS. / SIPHON
Very Thin less than 16 sec. Zahn #2 inks , dyes, solvents, stains	0.5, 0.8 mm x 1090	10	P
	0.5, 0.8 mm x 1092	11	P
Thin 16 to 20 sec. Zahn #2 lacquers, enamels, primers, sealers	1.0, 1.2 mm x 1092	11	P
	1.0, 1.2 mm x 1093	12	P
Medium 21 to 30 sec. Zahn #2 automotive base coat enamels, primers epoxies, urethanes automotive clear coat	1.3, 1.4, 1.5 mm x 1093	12	P
	1.3, 1.4, 1.5 mm x 1095	12	P
	1.3, 1.4, 1.5 mm x 1097	13	P
Heavy over 30 sec. Zahn #2 heavy body primers high solid enamels high solid automotive coatings adhesives	1.6, 1.7 mm x 1095	12	P
	1.6, 1.7 mm x 1097	13	P
	1.6, 1.7 mm x 1195	13	P
	1.6, 1.7 mm x 1197	14	P

L100C CONVENTIONAL SPRAY GUN

MATERIAL TYPE	FLUID ORIFICE x AIR CAP	MAXIMUM PATTERN WIDTH	PRESS. / SIPHON
Very Thin less than 16 sec. Zahn #2 inks , dyes, solvents, stains	0.6, 0.7 mm x 2163	8	P
	0.6, 0.7 mm x 2166	9	S
	0.6, 0.7 mm x 2266	12	S
Thin 16 to 20 sec. Zahn #2 lacquers, enamels, primers, sealers	0.6, 0.7, 1.0 mm x 2163	8	P
	0.6, 0.7, 1.0 mm x 2366	14	S
	0.6, 0.7, 1.0 mm x 2466	13	S
Medium 21 to 30 sec. Zahn #2 automotive base coat enamels, primers epoxies, urethanes automotive clear coat	1.2, 1.3, 1.5, 1.8 mm x 2263	14	P
	1.2, 1.3, 1.5, 1.8 mm x 2266	10	S
	1.2, 1.3, 1.5, 1.8 mm x 2266-3	15	S
	1.2, 1.3, 1.5, 1.8 mm x 2466	13	S
Heavy over 30 sec. Zahn #2 heavy body primers high solid enamels high solid automotive coatings adhesives	1.5, 1.8mm x 2466	13	S
	2.2 mm x 2167	12	P
	2.2 mm x 2267	15	P
	2.8 mm x 2168	12	P